



MAINE TOWER
HARBOUR CENTRAL

THE APARTMENTS • NOVEMBER 2019

MILLHARBOUR | LONDON E14



MAINE TOWER
HARBOUR CENTRAL

A DEVELOPMENT ABOVE ALL OTHERS



A JOINT DEVELOPMENT BY

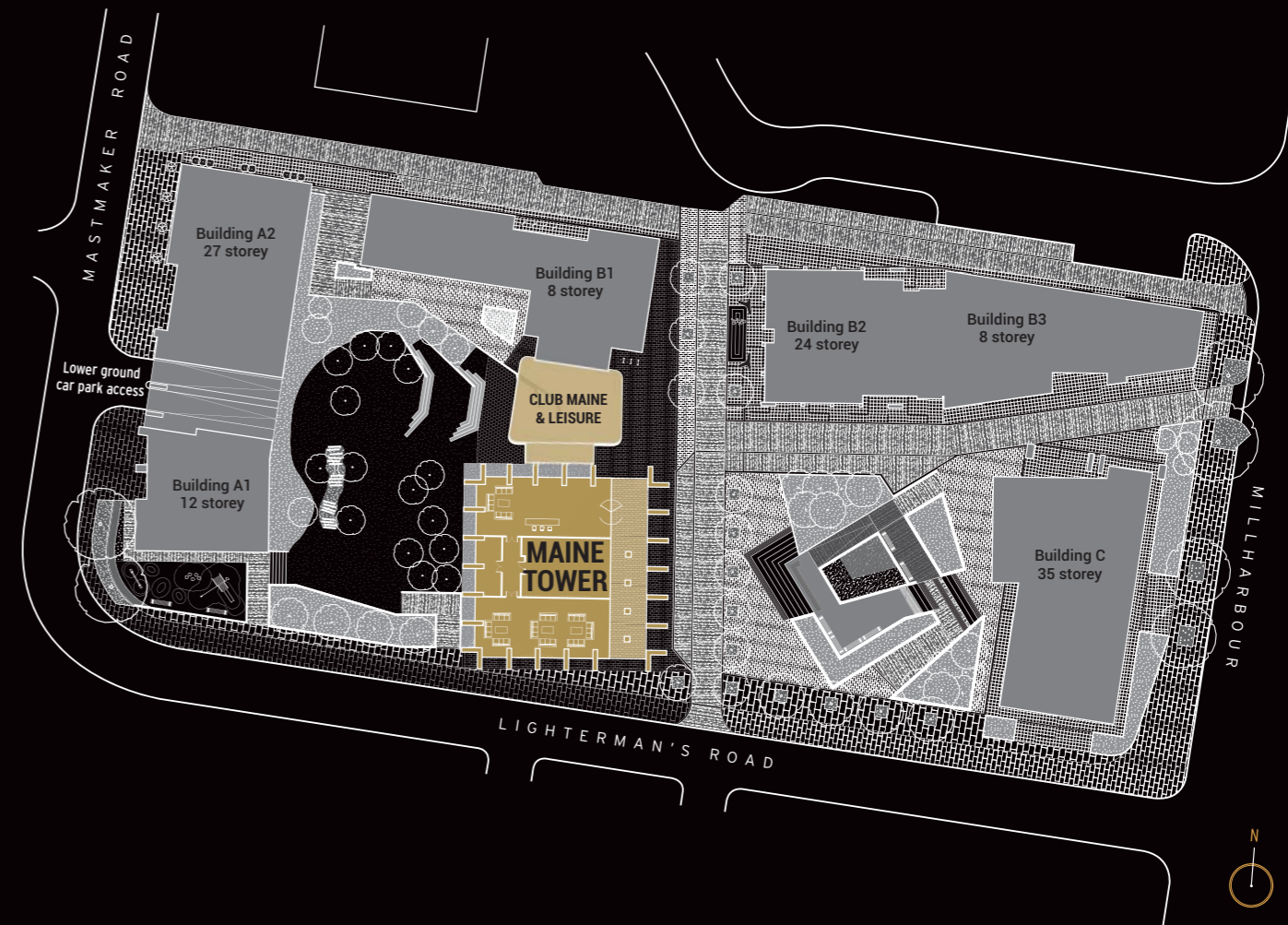


Galliard Homes present
London's brand new Manhattan style
sky level 'vertical village' overlooking
Canary Wharf

Take a view

ACTUAL VISTA FROM LEVEL 38





Development overview

A MAJOR MIXED USE REGENERATION SHOWCASE

- Maine Tower is the principal all private residential tower within a 2.65 acre development collectively known as Harbour Central.
- Maine Tower offers a choice of studio and 1, 2 & 3 bedroom apartments arranged from 2nd to 38th floor level.
- Lateral and duplex penthouses crown the 39th to 41st levels.
- Both the fabulous art deco influenced double height reception foyer and apartment interiors have been the concept of internationally acclaimed interior designer Nicola Fontanella of Argent Design.
- The overall scheme is planned to include restaurants, retail and high quality office space.
- New public realm will incorporate sunken and raised landscaped gardens with feature water fountains and art sculptures.
- Maine Tower will also offer extensive lower ground secure car parking, 24 hour concierge and access to an array of exclusive lifestyle facilities (within an independently operated adjoining club building).



Computer generated image of Maine Tower reception foyer, finishes, furniture and decor shown for illustrative purposes only, details may vary.





Maine Tower is set to become an iconic new landmark on London Docklands skyline.

The development is located little over 5 minutes walk from the financial heart of Canary Wharf, its transport network, fabulous shopping malls, bars, restaurants and dynamic cultural pursuits.

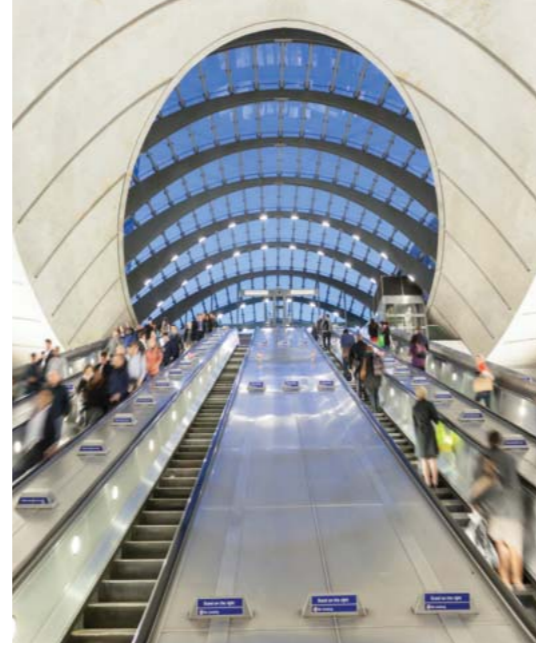
Residents at Maine Tower will be amid a world class district offering a lifestyle in a class of its own.

Location overview

CANARY WHARF – A WORLD CLASS DISTRICT

- Little over 10 minutes walk of One Canada Square.
- Superbly located for access to the Jubilee line, DLR and forthcoming Elizabeth Line service at Crossrail Place.
- 10 minutes walk from Jubilee Park and Gardens.
- Canary Wharf now has more than 120 boutiques and brand name stores across five malls.
- The E14 district is London's highest salary postcode.
- The 16 largest banks in the UK employ some 44,500 staff at Canary Wharf.
- The district is now the biggest employer of bankers in Europe – overtaking that of the City of London.
- The apartments at Maine Tower offer exceptional investor opportunities with an unprecedented corporate rental catchment.





Local, regional and international travel connectivity from Canary Wharf is second to none.

West End shopping is a 15 minute hop on the tube, London City airport is similar journey time on the DLR and when Crossrail is fully operational, London Heathrow will be under 40 minutes from Canary Wharf.

Residents at Maine Tower will also be one stop from North Greenwich – providing immediate access to the O2 Arena and Emirates Cable Car services across to the Royal Docks.

Canary Wharf is now the hub of one of the UK's most advanced transport infrastructures

Average journey times from Canary Wharf include:

Jubilee Line

North Greenwich	2 mins
Bermondsey	4 mins
London Bridge	6 mins
Southwark	8 mins
Waterloo	10 mins
Stratford	11 mins
Westminster	11 mins
Green Park	13 mins
Bond Street	15 mins

Future Crossrail

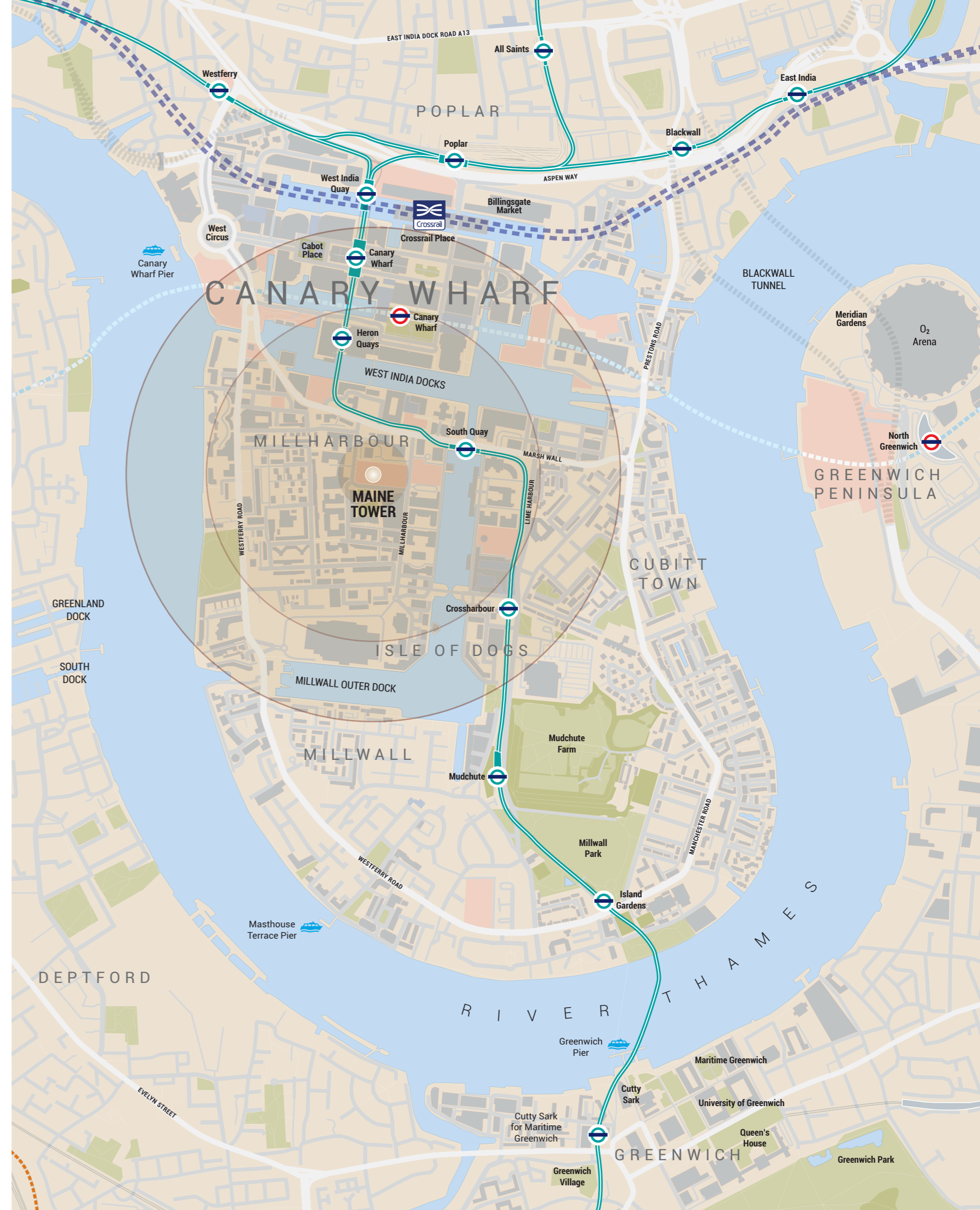
Custom House	3 mins
Whitechapel	3 mins
Liverpool Street	6 mins
Stratford	8 mins
Farringdon	8 mins
Tottenham Court Rd	11 mins
Bond Street	13 mins
Paddington	16 mins
London Heathrow	39 mins

Docklands Light Railway

Being London's only automated metro system, The DLR continues to be a fast link between the Capital's two financial hubs – The City & Canary Wharf, while also providing services to London City airport, the Royal Docks and Stratford.

Thames Clipper

Canary Wharf Pier is approximately 10 minutes walk from Harbour Central, providing commuter and visitor shuttles to London Bridge, Waterloo and Westminster piers.



The apartments

INTERIORS & FLOOR PLANS



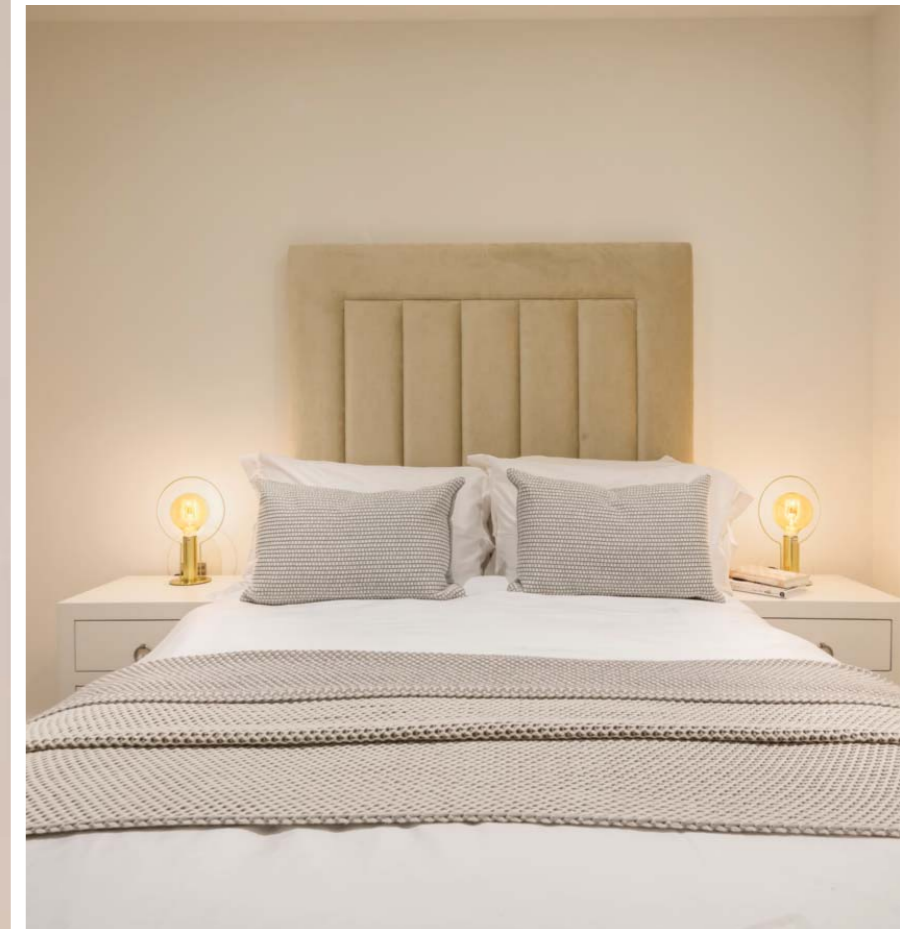


Interior images are show apartments at Maine Tower with actual specification and finishes.



Each apartment at Maine Tower will be luxuriously appointed, finished and equipped for contemporary 21st century living. The development has been designed to exude the highest levels of prestige and exclusivity for each resident.









201 1 bed apartment Internal area 61.3 sq.m. 659 sq.ft. External area 6.5 sq.m. 69 sq.ft	202 1 bed apartment Internal area 51.0 sq.m. 548 sq.ft. External area 6.5 sq.m. 69 sq.ft	203 1 bed apartment Internal area 55.9 sq.m. 601 sq.ft. External area 6.5 sq.m. 69 sq.ft	204 2 bed apartment Internal area 73.0 sq.m. 785 sq.ft. External area 6.5 sq.m. 69 sq.ft	205 1 bed apartment Internal area 50.0 sq.m. 538 sq.ft. External area 6.5 sq.m. 69 sq.ft	206 2 bed apartment Internal area 63.6 sq.m. 684 sq.ft. External area 6.5 sq.m. 69 sq.ft	207 1 bed apartment Internal area 55.9 sq.m. 601 sq.ft. External area 6.5 sq.m. 69 sq.ft
--	--	--	--	--	--	--

Studio
 1 Bed
 2 Bed
 3 Bed

1 & 2 Bedroom Apartments

LEVEL **2**



301 401 501 601 1 bed apartment Internal area 68.7 sq.m. 739 sq.ft. External area 6.0 sq.m. 64 sq.ft	302 402 502 602 1 bed apartment Internal area 56.3 sq.m. 606 sq.ft. External area 6.0 sq.m. 64 sq.ft	303 403 503 603 1 bed apartment Internal area 58.0 sq.m. 624 sq.ft. External area 6.0 sq.m. 64 sq.ft	304 404 504 604 2 bed apartment Internal area 78.9 sq.m. 849 sq.ft. External area 6.0 sq.m. 64 sq.ft	305 405 505 605 1 bed apartment Internal area 51.4 sq.m. 553 sq.ft. External area 6.5 sq.m. 69 sq.ft	306 406 506 606 2 bed apartment Internal area 68.8 sq.m. 740 sq.ft. External area 6.0 sq.m. 64 sq.ft	307 407 507 607 1 bed apartment Internal area 58.0 sq.m. 624 sq.ft. External area 6.0 sq.m. 64 sq.ft
--	--	--	--	--	--	--

1 & 2 Bedroom Apartments

LEVEL **3-6**

NORTH ASPECT - TOWARDS CANARY WHARF



EAST ASPECT - TOWARDS MILLWALL DOCK

SOUTH ASPECT - DOCKLANDS TOWARDS GREENWICH

701 801 901 1001 2 bed apartment Internal area 78.9 sq.m. 849 sq.ft. External area 6.0 sq.m. 64 sq.ft	702 802 902 1002 1 bed apartment Internal area 51.5 sq.m. 554 sq.ft. External area 6.5 sq.m. 69 sq.ft	703 803 903 1003 2 bed apartment Internal area 67.8 sq.m. 729 sq.ft. External area 6.0 sq.m. 64 sq.ft	704 804 904 1004 1 bed apartment Internal area 58.0 sq.m. 624 sq.ft. External area 6.0 sq.m. 64 sq.ft
705 805 905 1005 2 bed apartment Internal area 78.9 sq.m. 849 sq.ft. External area 6.0 sq.m. 64 sq.ft	706 806 906 1006 1 bed apartment Internal area 51.4 sq.m. 553 sq.ft. External area 6.5 sq.m. 69 sq.ft	707 807 907 1007 2 bed apartment Internal area 67.9 sq.m. 730 sq.ft. External area 6.0 sq.m. 64 sq.ft	708 808 908 1008 1 bed apartment Internal area 58.0 sq.m. 624 sq.ft. External area 6.0 sq.m. 64 sq.ft

Studio 1 Bed 2 Bed 3 Bed

1 & 2 Bedroom Apartments

LEVEL 7-10

NORTH ASPECT - TOWARDS CANARY WHARF



EAST ASPECT - TOWARDS MILLWALL DOCK

SOUTH ASPECT - DOCKLANDS TOWARDS GREENWICH

1101 1 bed apartment Internal area 48.0 sq.m. 516 sq.ft. External area 5.5 sq.m. 59 sq.ft	1102 1 bed apartment Internal area 49.8 sq.m. 536 sq.ft. External area 6.5 sq.m. 69 sq.ft	1103 2 bed apartment Internal area 62.6 sq.m. 673 sq.ft. External area 6.3 sq.m. 67 sq.ft	1104 Studio apartment Internal area 31.9 sq.m. 343 sq.ft. External area 6.4 sq.m. 68 sq.ft	1105 Studio apartment Internal area 35.0 sq.m. 376 sq.ft. External area 6.2 sq.m. 66 sq.ft
1106 1 bed apartment Internal area 48.0 sq.m. 516 sq.ft. External area 5.5 sq.m. 59 sq.ft	1107 1 bed apartment Internal area 49.8 sq.m. 536 sq.ft. External area 6.5 sq.m. 69 sq.ft	1108 2 bed apartment Internal area 62.8 sq.m. 675 sq.ft. External area 6.3 sq.m. 67 sq.ft	1109 Studio apartment Internal area 31.9 sq.m. 343 sq.ft. External area 6.4 sq.m. 68 sq.ft	1110 Studio apartment Internal area 35.0 sq.m. 376 sq.ft. External area 6.2 sq.m. 66 sq.ft

Studio, 1 & 2 Bedroom Apartments

LEVEL 11

NORTH ASPECT - TOWARDS CANARY WHARF



WEST ASPECT - TOWARDS THE CITY

EAST ASPECT - TOWARDS MILLWALL DOCK

SOUTH ASPECT - DOCKLANDS TOWARDS GREENWICH

<p>1201 1 bed apartment Internal area 52.2 sq.m. 561 sq.ft. External area 6.0 sq.m. 64 sq.ft.</p>	<p>1202 1 bed apartment Internal area 51.4 sq.m. 553 sq.ft. External area 6.5 sq.m. 69 sq.ft.</p>	<p>1203 2 bed apartment Internal area 70.9 sq.m. 763 sq.ft. External area 6.5 sq.m. 69 sq.ft.</p>	<p>1204 Studio apartment Internal area 32.1 sq.m. 345 sq.ft. External area 5.9 sq.m. 63 sq.ft.</p>	<p>1205 Studio apartment Internal area 35.0 sq.m. 376 sq.ft. External area 5.9 sq.m. 63 sq.ft.</p>
<p>1206 1 bed apartment Internal area 52.2 sq.m. 561 sq.ft. External area 6.0 sq.m. 64 sq.ft.</p>	<p>1207 1 bed apartment Internal area 51.3 sq.m. 552 sq.ft. External area 6.5 sq.m. 69 sq.ft.</p>	<p>1208 2 bed apartment Internal area 71.0 sq.m. 764 sq.ft. External area 6.5 sq.m. 69 sq.ft.</p>	<p>1209 Studio apartment Internal area 32.1 sq.m. 345 sq.ft. External area 5.9 sq.m. 63 sq.ft.</p>	<p>1210 Studio apartment Internal area 35.0 sq.m. 376 sq.ft. External area 5.9 sq.m. 63 sq.ft.</p>

Studio 1 Bed 2 Bed 3 Bed

Studio, 1 & 2 Bedroom Apartments

LEVEL 12

NORTH ASPECT - TOWARDS CANARY WHARF



WEST ASPECT - TOWARDS THE CITY

EAST ASPECT - TOWARDS MILLWALL DOCK

SOUTH ASPECT - DOCKLANDS TOWARDS GREENWICH

<p>1301 1 bed apartment Internal area 52.2 sq.m. 561 sq.ft. External area 6.0 sq.m. 64 sq.ft.</p>	<p>1302 1 bed apartment Internal area 51.4 sq.m. 553 sq.ft. External area 6.5 sq.m. 69 sq.ft.</p>	<p>1303 2 bed apartment Internal area 70.9 sq.m. 763 sq.ft. External area 6.5 sq.m. 69 sq.ft.</p>	<p>1304 Studio apartment Internal area 32.1 sq.m. 345 sq.ft. External area 5.9 sq.m. 63 sq.ft.</p>	<p>1305 Studio apartment Internal area 35.0 sq.m. 376 sq.ft. External area 5.9 sq.m. 63 sq.ft.</p>
<p>1306 1 bed apartment Internal area 52.2 sq.m. 561 sq.ft. External area 6.0 sq.m. 64 sq.ft.</p>	<p>1307 1 bed apartment Internal area 51.3 sq.m. 552 sq.ft. External area 6.5 sq.m. 69 sq.ft.</p>	<p>1308 2 bed apartment Internal area 71.0 sq.m. 764 sq.ft. External area 6.5 sq.m. 69 sq.ft.</p>	<p>1309 Studio apartment Internal area 32.1 sq.m. 345 sq.ft. External area 5.9 sq.m. 63 sq.ft.</p>	<p>1310 Studio apartment Internal area 35.0 sq.m. 376 sq.ft. External area 5.9 sq.m. 63 sq.ft.</p>

Studio, 1 & 2 Bedroom Apartments

LEVEL 13



WEST ASPECT - TOWARDS THE CITY

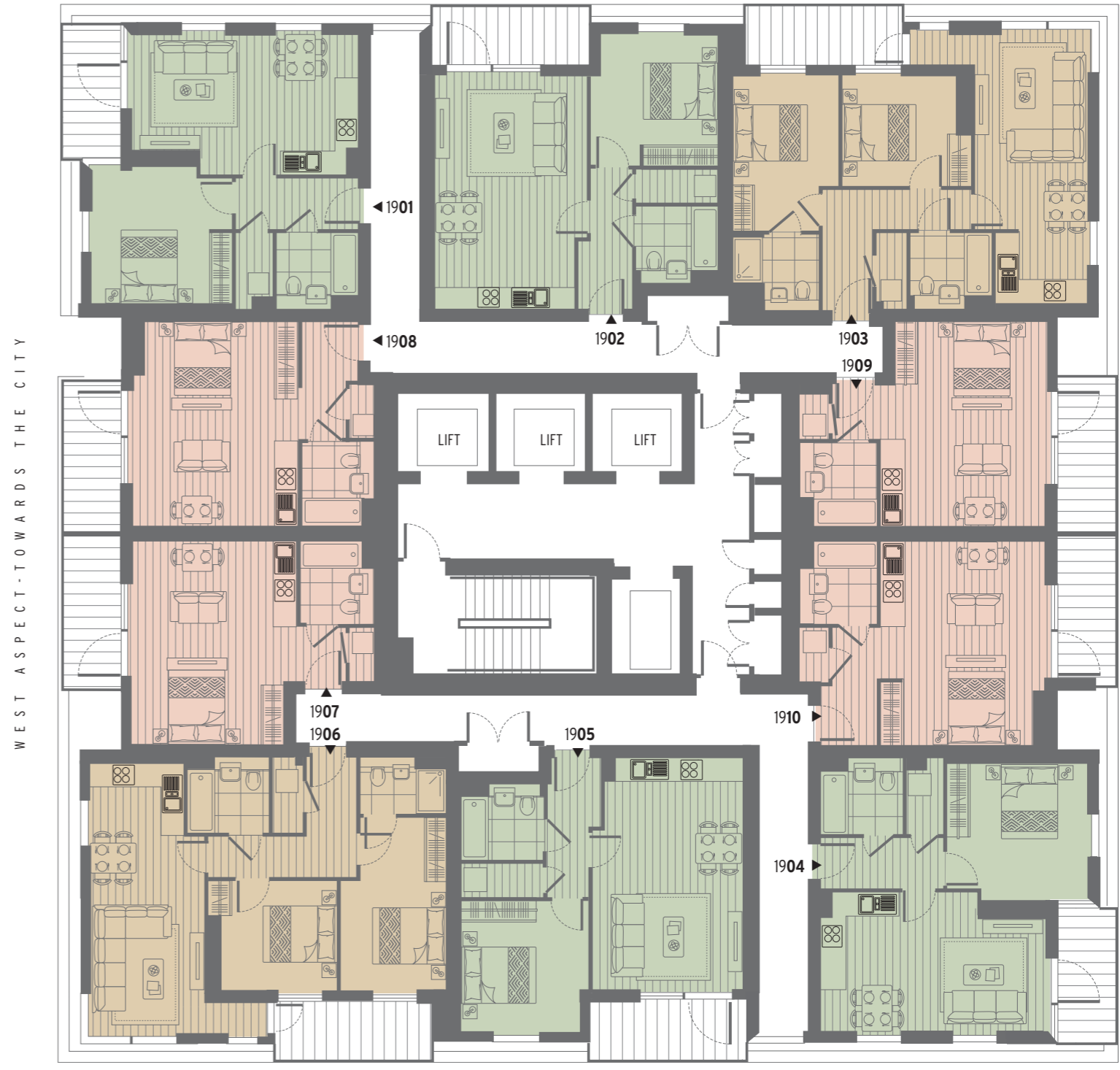
EAST ASPECT - TOWARDS MILLWALL DOCK

<p>1401 1501 1601 1701 1801 1 bed apartment Internal area 52.4 sq.m. 564 sq.ft. External area 6.0 sq.m. 64 sq.ft.</p>	<p>1402 1502 1602 1702 1802 1 bed apartment Internal area 51.4 sq.m. 553 sq.ft. External area 6.5 sq.m. 69 sq.ft.</p>	<p>1403 1503 1603 1703 1803 2 bed apartment Internal area 70.9 sq.m. 763 sq.ft. External area 6.5 sq.m. 69 sq.ft.</p>	<p>1404 1504 1604 1704 1804 Studio apartment Internal area 32.1 sq.m. 345 sq.ft. External area 5.9 sq.m. 63 sq.ft.</p>	<p>1405 1505 1605 1705 1805 Studio apartment Internal area 35.0 sq.m. 376 sq.ft. External area 5.9 sq.m. 63 sq.ft.</p>
<p>1406 1506 1606 1706 1806 1 bed apartment Internal area 52.4 sq.m. 564 sq.ft. External area 6.0 sq.m. 64 sq.ft.</p>	<p>1407 1507 1607 1707 1807 1 bed apartment Internal area 51.3 sq.m. 552 sq.ft. External area 6.5 sq.m. 69 sq.ft.</p>	<p>1408 1508 1608 1708 1808 2 bed apartment Internal area 71.0 sq.m. 764 sq.ft. External area 6.5 sq.m. 69 sq.ft.</p>	<p>1409 1509 1609 1709 1809 Studio apartment Internal area 32.1 sq.m. 345 sq.ft. External area 5.9 sq.m. 63 sq.ft.</p>	<p>1410 1510 1610 1710 1810 Studio apartment Internal area 35.0 sq.m. 376 sq.ft. External area 5.9 sq.m. 63 sq.ft.</p>

Studio 1 Bed 2 Bed 3 Bed

Studio, 1 & 2 Bedroom Apartments

LEVEL 14-18



WEST ASPECT - TOWARDS THE CITY

EAST ASPECT - TOWARDS MILLWALL DOCK

<p>1901 1 bed apartment Internal area 52.4 sq.m. 564 sq.ft. External area 6.0 sq.m. 64 sq.ft.</p>	<p>1902 1 bed apartment Internal area 51.4 sq.m. 553 sq.ft. External area 6.5 sq.m. 69 sq.ft.</p>	<p>1903 2 bed apartment Internal area 70.9 sq.m. 763 sq.ft. External area 6.5 sq.m. 69 sq.ft.</p>	<p>1904 1 bed apartment Internal area 52.4 sq.m. 564 sq.ft. External area 6.0 sq.m. 64 sq.ft.</p>	<p>1905 1 bed apartment Internal area 51.3 sq.m. 552 sq.ft. External area 6.5 sq.m. 69 sq.ft.</p>
<p>1906 2 bed apartment Internal area 71.0 sq.m. 764 sq.ft. External area 6.5 sq.m. 69 sq.ft.</p>	<p>1907 Studio apartment Internal area 32.1 sq.m. 345 sq.ft. External area 5.9 sq.m. 63 sq.ft.</p>	<p>1908 Studio apartment Internal area 35.0 sq.m. 376 sq.ft. External area 5.9 sq.m. 63 sq.ft.</p>	<p>1909 Studio apartment Internal area 32.1 sq.m. 345 sq.ft. External area 5.9 sq.m. 63 sq.ft.</p>	<p>1910 Studio apartment Internal area 35.0 sq.m. 376 sq.ft. External area 5.9 sq.m. 63 sq.ft.</p>

Studio, 1 & 2 Bedroom Apartments

LEVEL 19



EAST ASPECT - TOWARDS MILLWALL DOCK

<p>2001 1 bed apartment Internal area 48.2 sq.m. 518 sq.ft. External area 5.5 sq.m. 59 sq.ft</p>	<p>2002 1 bed apartment Internal area 49.8 sq.m. 536 sq.ft. External area 6.5 sq.m. 69 sq.ft</p>	<p>2003 2 bed apartment Internal area 65.4 sq.m. 703 sq.ft. External area 6.5 sq.m. 69 sq.ft</p>	<p>2004 Studio apartment Internal area 31.9 sq.m. 343 sq.ft. External area 6.2 sq.m. 66 sq.ft</p>	<p>2005 Studio apartment Internal area 35.0 sq.m. 376 sq.ft. External area 6.2 sq.m. 66 sq.ft</p>
<p>2006 1 bed apartment Internal area 48.2 sq.m. 518 sq.ft. External area 5.5 sq.m. 59 sq.ft</p>	<p>2007 1 bed apartment Internal area 49.8 sq.m. 536 sq.ft. External area 6.5 sq.m. 69 sq.ft</p>	<p>2008 2 bed apartment Internal area 65.6 sq.m. 706 sq.ft. External area 6.5 sq.m. 69 sq.ft</p>	<p>2009 Studio apartment Internal area 31.9 sq.m. 343 sq.ft. External area 6.2 sq.m. 66 sq.ft</p>	<p>2010 Studio apartment Internal area 35.0 sq.m. 376 sq.ft. External area 6.2 sq.m. 66 sq.ft</p>

■ Studio
 ■ 1 Bed
 ■ 2 Bed
 ■ 3 Bed
 Studio, 1 & 2 Bedroom Apartments

LEVEL 20



EAST ASPECT - TOWARDS MILLWALL DOCK

<p>2101 2201 2301 2401 2501 2601 2701 2801 2 bed apartment Internal area 79.2 sq.m. 852 sq.ft. External area 6.0 sq.m. 64 sq.ft</p>	<p>2102 2202 2302 2402 2502 2602 2702 2802 1 bed apartment Internal area 51.5 sq.m. 554 sq.ft. External area 6.5 sq.m. 69 sq.ft</p>	<p>2103 2203 2303 2403 2503 2603 2703 2803 2 bed apartment Internal area 68.1 sq.m. 733 sq.ft. External area 6.0 sq.m. 64 sq.ft</p>	<p>2104 2204 2304 2404 2504 2604 2704 2804 1 bed apartment Internal area 58.0 sq.m. 624 sq.ft. External area 6.0 sq.m. 64 sq.ft</p>
<p>2105 2205 2305 2405 2505 2605 2705 2805 2 bed apartment Internal area 79.2 sq.m. 852 sq.ft. External area 6.0 sq.m. 64 sq.ft</p>	<p>2106 2206 2306 2406 2506 2606 2706 2806 1 bed apartment Internal area 51.4 sq.m. 553 sq.ft. External area 6.5 sq.m. 69 sq.ft</p>	<p>2107 2207 2307 2407 2507 2607 2707 2807 2 bed apartment Internal area 68.2 sq.m. 734 sq.ft. External area 6.0 sq.m. 64 sq.ft</p>	<p>2108 2208 2308 2408 2508 2608 2708 2808 1 bed apartment Internal area 58.0 sq.m. 624 sq.ft. External area 6.0 sq.m. 64 sq.ft</p>

1 & 2 Bedroom Apartments

LEVEL 21-28

NORTH ASPECT-TOWARDS CANARY WHARF



WEST ASPECT-TOWARDS THE CITY

EAST ASPECT-TOWARDS MILLWALL DOCK

SOUTH ASPECT-DOCKLANDS TOWARDS GREENWICH

2901 3 bed apartment Internal area 104.5 sq.m. 1124 sq.ft. External area 12.7 sq.m. 136 sq.ft.	2902 2 bed apartment Internal area 86.1 sq.m. 926 sq.ft. External area 6.3 sq.m. 67 sq.ft.	2903 1 bed apartment Internal area 55.9 sq.m. 601 sq.ft. External area 6.3 sq.m. 67 sq.ft.	2904 3 bed apartment Internal area 97.0 sq.m. 1044 sq.ft. External area 12.7 sq.m. 136 sq.ft.	2905 2 bed apartment Internal area 86.2 sq.m. 927 sq.ft. External area 6.3 sq.m. 67 sq.ft.	2906 1 bed apartment Internal area 55.9 sq.m. 601 sq.ft. External area 6.3 sq.m. 67 sq.ft.
--	--	--	---	--	--

Studio 1 Bed 2 Bed 3 Bed

1, 2 & 3 Bedroom Apartments

LEVEL 29

NORTH ASPECT-TOWARDS CANARY WHARF



WEST ASPECT-TOWARDS THE CITY

EAST ASPECT-TOWARDS MILLWALL DOCK

SOUTH ASPECT-DOCKLANDS TOWARDS GREENWICH

3001 3101 3201 3301 3 bed apartment Internal area 114.2 sq.m. 1229 sq.ft. External area 12.0 sq.m. 129 sq.ft.	3002 3102 3202 3302 3 bed apartment Internal area 99.9 sq.m. 1075 sq.ft. External area 6.0 sq.m. 64 sq.ft.	3003 3103 3203 3303 1 bed apartment Internal area 57.7 sq.m. 621 sq.ft. External area 6.0 sq.m. 64 sq.ft.	3004 3104 3204 3304 3 bed apartment Internal area 106.6 sq.m. 1147 sq.ft. External area 12.0 sq.m. 129 sq.ft.	3005 3105 3205 3305 3 bed apartment Internal area 99.9 sq.m. 1075 sq.ft. External area 6.0 sq.m. 64 sq.ft.	3006 3106 3206 3306 1 bed apartment Internal area 57.7 sq.m. 621 sq.ft. External area 6.0 sq.m. 64 sq.ft.
---	--	---	---	--	---

1 & 3 Bedroom Apartments

LEVEL 30-33



WEST ASPECT - TOWARDS THE CITY

EAST ASPECT - TOWARDS MILLWALL DOCK

3401 3501 3601 3701 3 bed apartment	3402 3502 3602 3702 3 bed apartment	3403 3503 3603 3703 1 bed apartment	3404 3504 3604 3704 3 bed apartment	3405 3505 3605 3705 3 bed apartment	3406 3506 3606 3706 1 bed apartment
Internal area 114.2 sq.m. 1229 sq.ft.	Internal area 99.9 sq.m. 1075 sq.ft.	Internal area 57.7 sq.m. 621 sq.ft.	Internal area 106.6 sq.m. 1147 sq.ft.	Internal area 99.9 sq.m. 1075 sq.ft.	Internal area 57.7 sq.m. 621 sq.ft.
External area 12.0 sq.m. 129 sq.ft.	External area 6.0 sq.m. 64 sq.ft.	External area 6.0 sq.m. 64 sq.ft.	External area 12.0 sq.m. 129 sq.ft.	External area 6.0 sq.m. 64 sq.ft.	External area 6.0 sq.m. 64 sq.ft.

■ Studio
 ■ 1 Bed
 ■ 2 Bed
 ■ 3 Bed

1 & 3 Bedroom Apartments

LEVEL **34-37**



WEST ASPECT - TOWARDS THE CITY

EAST ASPECT - TOWARDS MILLWALL DOCK

3801 3 bed apartment	3802 2 bed apartment	3803 1 bed apartment	3804 3 bed apartment	3805 2 bed apartment	3806 1 bed apartment
Internal area 106.0 sq.m. 1140 sq.ft.	Internal area 87.7 sq.m. 943 sq.ft.	Internal area 56.6 sq.m. 609 sq.ft.	Internal area 98.5 sq.m. 1060 sq.ft.	Internal area 87.7 sq.m. 943 sq.ft.	Internal area 56.6 sq.m. 609 sq.ft.
External area 14.8 sq.m. 159 sq.ft.	External area 8.5 sq.m. 91 sq.ft.	External area 6.5 sq.m. 69 sq.ft.	External area 14.8 sq.m. 159 sq.ft.	External area 8.5 sq.m. 91 sq.ft.	External area 6.5 sq.m. 69 sq.ft.

1, 2 & 3 Bedroom Apartments

LEVEL **38**

General Specification

- Matt satin white painted walls and smooth ceilings.
- Satin white finish door linings, architraves and skirtings.
- Extended height internal doors.
- Brushed stainless steel door furniture including lever door handles with square shaft and rose.
- Brushed metal switch and socket plates.
- Programmable mood lighting to principal living area and all bedrooms.
- Colour video security entry phone system.
- Recessed LED downlighting with white bezels.
- Thermostatically controlled central heating via flat panelled radiators with additional comfort cooling to living/dining areas and all bedrooms.
- Pressurised hot and cold water supplies.
- Double glazing throughout.
- Sonos Play 1 wireless multi-room speaker technology.

Kitchen Area

- Amtico click black walnut flooring.
- Two tone designer kitchen units with dark grey base level finish, white matt finish to wall units, all with soft close and concealed handles.
- Stone worktop with full height ice white glass splashback.
- Smeg stainless steel fully integrated electric appliances to include:-
 - Single low level oven
 - 4 ring ceramic hob
 - Cooker hood
 - Washer/dryer (freestanding if within utility cupboard)
 - Hot water steam tap
 - Dishwasher
 - Fridge/freezer
 - Microwave with grill
- Stainless steel bowl and a half under-mounted sink with monobloc mixer tap and grooved worktop drainer.
- Low energy wall unit under lighting.
- Centralised appliance isolator switch panel.

Note: Studio kitchen may not incorporate a full suite of appliances.

Living/Dining Room

- Amtico click black walnut flooring.
- Bespoke entertainment unit to living/dining area providing low level cupboard space and bookcase storage above. Studios to receive a double sided TV unit with swivel TV feature between bed space and lounge seating area.
- Sonos Playbar within entertainment unit providing hi-fi quality sound and wireless music streaming (subject to subscription).
- TV socket set to living room (Sky+) subject to subscription. All TV socket sets to include digital radio and terrestrial sockets.
- Telephone socket to living/dining area.
- 40-50" LED smart TV.

Bathroom/Shower Room

- Large format porcelain Caesar Mud floor tiling and Caesar Rope fully tiled walls.
- Electric mat underfloor warming.
- Walnut veneer framed recess with mirrored cabinet, mirror and feature downlight.
- Shaver socket.
- White bathroom suite featuring shower tray or steel bath as appropriate, WC, concealed dual flush cistern and semi-recessed basin.
- Mixer tap, bottle trap, cistern push plate, thermostatic bath filler/shower mixer diverter.
- Coloured glass bath panel.
- Concealed plumbing fixed chrome square shower head over bath and in shower enclosure with low level hose and handset.
- Chrome plated thermostatic electric heated towel rail.
- Clear glass frameless bath screen/shower enclosure.
- Tile vision LCD TV to master en-suite of 2 & 3 bed apartments.

Bedroom

- Quality oatmeal coloured carpet with underlay.
- Floor to ceiling fitted wardrobe with part mirrored white high gloss doors to all bedrooms.
- TV socket set to all bedrooms (Sky) subject to subscription. All TV socket sets to include digital radio and terrestrial sockets.
- Telephone extension socket to all bedrooms.

Apartment Hallway and Landing

- Amtico click black walnut flooring.
- Audio/visual entryphone system connected to communal entrance door.

Communal Areas

- Interior designed and art deco styled opulent double height reception foyer.
- Taxi and valet parking drop-off point.
- Three high speed passenger lifts to all apartment levels and lower ground parking.
- 24 hour concierge.
- Secure underground parking within development (at additional cost).
- Residents private cinema.
- Access to exclusive lifestyle and recreational facilities within Club Maine Leisure hub (subject to additional cost and independent operator conditions).





MAINE TOWER
HARBOUR CENTRAL

GALLIARD HOMES LIMITED
LONDON CENTRAL SALES & MARKETING SUITE
10 INDESCON SQUARE, LONDON E14 9EZ

020 7620 1500

sales@galliarthomes.com galliarthomes.com